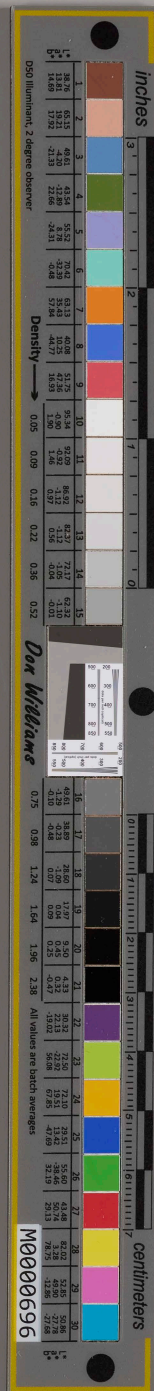
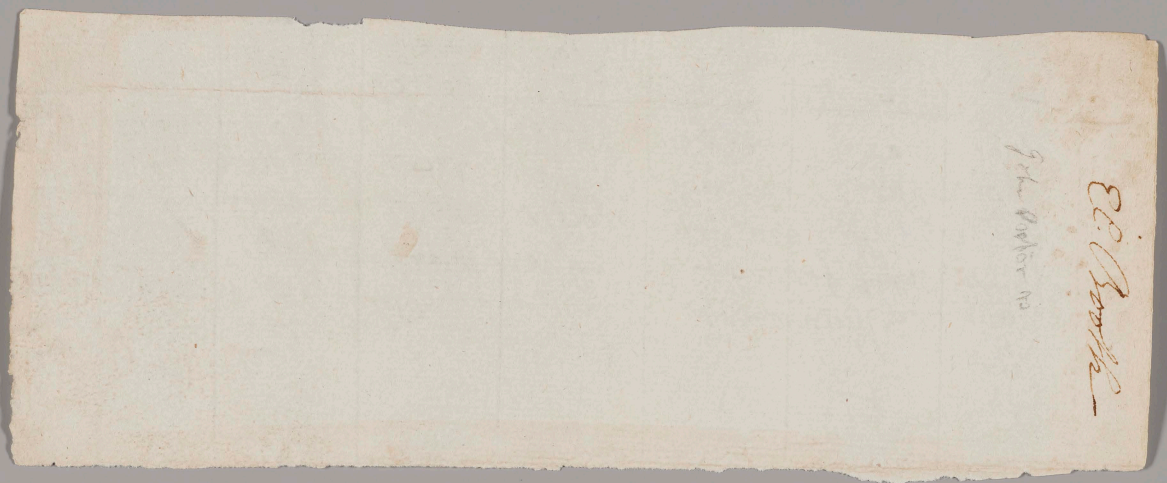


1848
The deposition of Eliz. B. who testifies and says
that since I have been afflicted I have been most grievously
tormented by my neighbor John Proctor Genl. or his appearance
also I have seen John Proctor Genl. or his appearance most
grievously torment and afflict Mary Walcott Mary Lewis
and Ann Putnam Junr. by pinching twisting and almost Choking
them
Just in Prison





E.C. Booth
John Booth no

