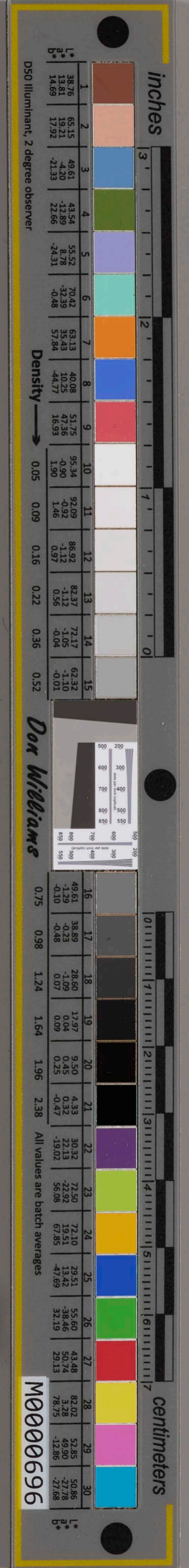
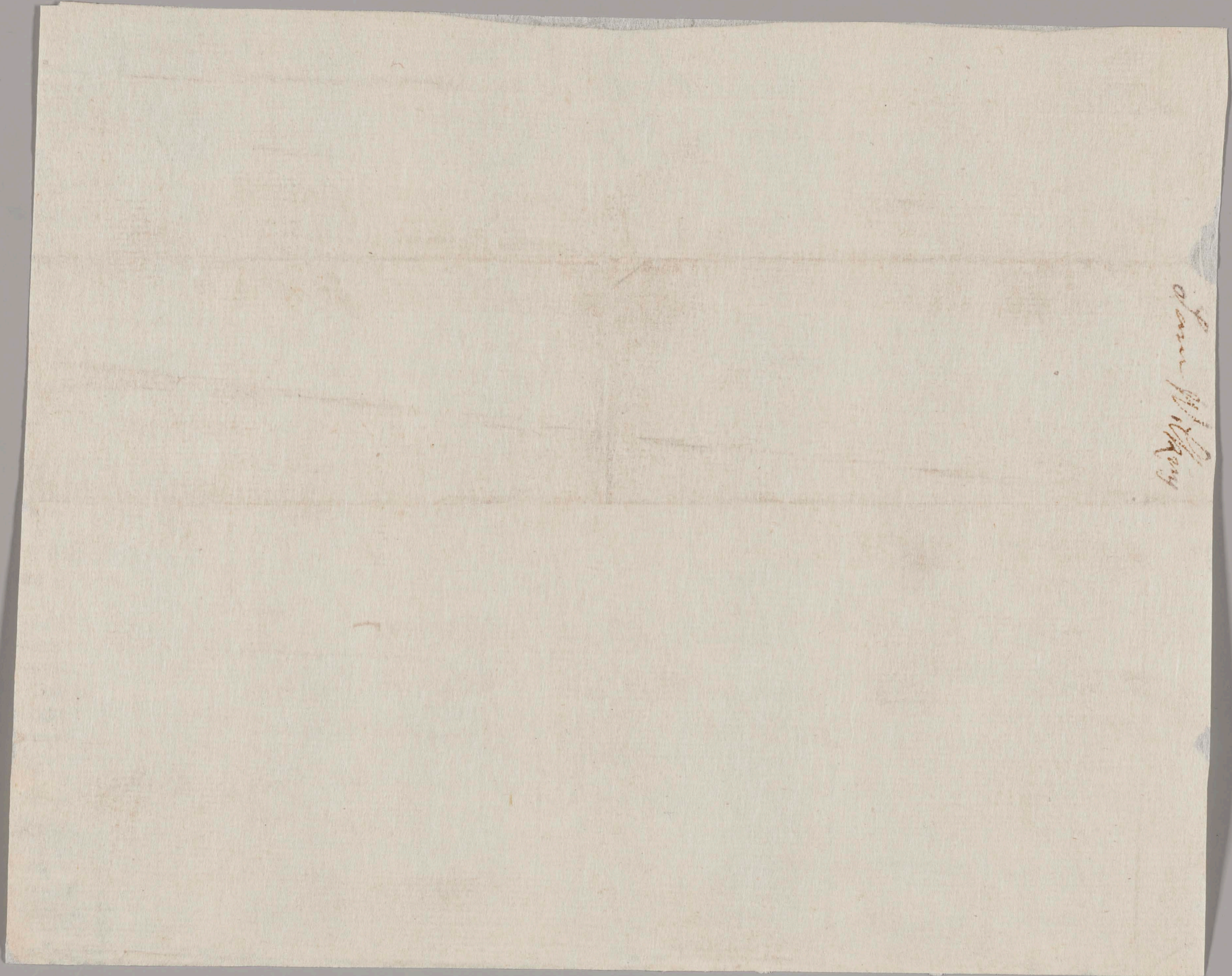


The deposition of Samuel Wilkes aged about 19 years <sup>249</sup> who  
 testified and said that since John Wilkes has been in prison I have  
 been affected in a strange kind of manner for about the latter end  
 of June or beginning of July as I was a weaver the yarn broke  
 exceedingly fast: and as I was a trying a thread I had a streak on my  
 hand like a knot the blood being almost ready to run out and I was also  
 pinched several times by an unseen hand: also riding to market  
 just as I came to Forrist Green Bridge I was immediately seized with  
 a violent pain on my back and I saw a black hate: and was immedi-  
 atly pulled off my horse or mare and almost pulled into the mire: but  
 holding fast at last I got up again: a while after as I was once in the  
 woods and a young boy a little boy with me: I thought I must run: and  
 I said to the boy let us run: and as soon as I ran there was a  
 black hate run along by me: a while after one morning about an hour  
 by sun I was affected and I saw John Wilkes or his appearance with  
 a dark colored coat: and a black hate very like that hate which I for-  
 -mously saw: a while after this one night as soon as I was a bed  
 John Wilkes whom I very well knew or his appearance came in  
 to the room where I was a bed: and another man and woman  
 along with him which I did not know: and they took me they would  
 carry me away before morning

Jurat in Oath





**inches**

3 2 1 0

1	2	3	4	5	6	7	8	9	10	11	12	13	14	15
25.4	50.8	76.2	101.6	127.0	152.4	177.8	203.2	228.6	254.0	279.4	304.8	330.2	355.6	381.0
L*	38.12	65.43	49.87	44.26	55.56	70.82	63.51	39.92	51.28	95.44	92.02	86.97	82.72	72.17
a*	13.80	19.21	-4.30	13.80	8.78	-32.39	35.43	10.25	47.26	-0.90	-1.12	-1.12	1.05	-1.10
b*	14.97	17.92	-21.33	22.06	-24.31	0.48	57.24	-40.77	18.53	1.50	0.97	0.26	0.28	0.03

D50 Illuminant, 2 degree observer

**Density** → 0.05 0.09 0.16 0.22 0.36 0.52

**centimeters**

3 2 1 0

**Dor Williams**

16	17	18	19	20	21	22	23	24	25	26	27	28	29	30
49.87	38.89	28.60	17.97	9.50	4.33	30.32	72.50	72.10	29.51	19.62	55.60	43.48	82.02	52.85
L*	42.96	31.41	21.00	11.98	6.44	31.41	72.46	72.06	29.37	19.47	55.56	43.39	81.92	52.76
a*	13.24	11.71	10.89	9.93	9.00	8.12	7.23	6.34	5.45	4.56	3.67	2.78	1.89	0.99
b*	15.07	13.96	12.94	11.92	10.90	9.88	8.86	7.84	6.82	5.80	4.78	3.76	2.74	1.72

All values are batch averages

**M000696**