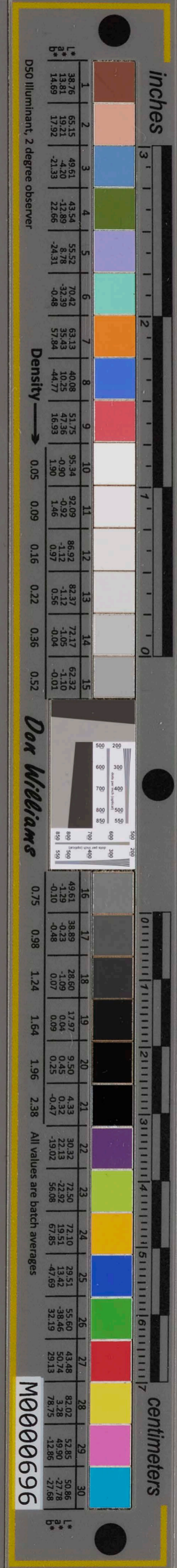


24

307

Nathaniel Ingersoll and Thomas Raymond both of Salem  
 Village Geo:ran Complaince on behalf of their  
 Majest<sup>ies</sup> against Benjamin procter the son of John  
 procter of Salem Harms, and Mary Dorich wife of  
 Michale Dorich and daughter of ~~William Duffen of Upper~~  
 and pease the wife of Robert pease of Salem  
 for sundry acts of Witchcraft by them committed on the bodies  
 of many Warren Abigail William & Elizabeth  
 of Salem Village, where by great hurt is done them  
 therefore pray Justice. Salem May 23<sup>rd</sup> 1692

Nathaniel Ingersoll  
 The Mark of  
 Thomas Raymond



1848  
 24  
 [Faint, mostly illegible handwritten text in cursive script, possibly a list or account entry.]

inches 3 2 1 0  
 centimeters  
 D50 Illuminant, 2 degree observer  
 L\* a\* b\* Density  
 1 38.76 13.81 15.83  
 2 65.15 19.21 19.21  
 3 49.81 4.30 11.91  
 4 43.24 12.29 12.29  
 5 55.52 4.78 14.31  
 6 70.42 12.38 12.38  
 7 63.13 35.43 35.43  
 8 40.08 10.25 10.25  
 9 51.75 18.36 18.36  
 10 95.34 4.90 1.20  
 11 92.09 1.12 1.12  
 12 85.92 1.12 1.12  
 13 82.37 1.12 1.12  
 14 72.17 1.02 1.10  
 15 62.32 1.10 1.10  
 16 49.81 1.29 1.29  
 17 38.89 0.23 0.23  
 18 28.61 1.09 1.09  
 19 19.27 0.04 0.04  
 20 9.50 0.45 0.45  
 21 4.33 0.32 0.27  
 22 30.32 22.13 22.13  
 23 72.30 22.22 22.22  
 24 72.10 15.51 13.42  
 25 54.43 23.42 13.42  
 26 54.46 38.46 32.19  
 27 71.6 29.24 29.13  
 28 42.8 3.28 78.75  
 29 53.90 42.88 27.68  
 30 52.78 27.68 27.68  
 M0000696