

A note of what Samuell Graves hath bin owd
about the witches

Ans: for keeping Rachel Clinton in Ipswich
prison two weeks and fees ——— 0.10.0

2 Sarah Good with her Child 3 days ——— 0.6.0

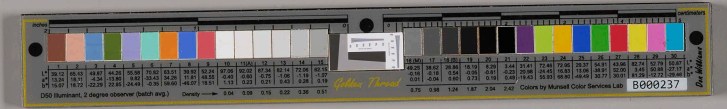
3 Six days his wife tended four days }
at Salem as witness 1 day to fetch them } 0.12.0

Samuell Graves was at the wharf for a
horse and man to bring his wife whom
from Salem then

an horse to Salem to carry down one woman 3-0
with graine carry goodwife Graves to fallm¹
one day ——— 1-3-0

of widdow Gillshere 5 days at Salem }
to give evidence ——— } 10-0

with dimand 5 days at Salem to give
evidence of her husband to carry her — 4-0
aman to carry & fetch widdow Gillshere — 4



*Samuel Jones of
in with case.*

*Samuel Jones
of the
of the
of the*