

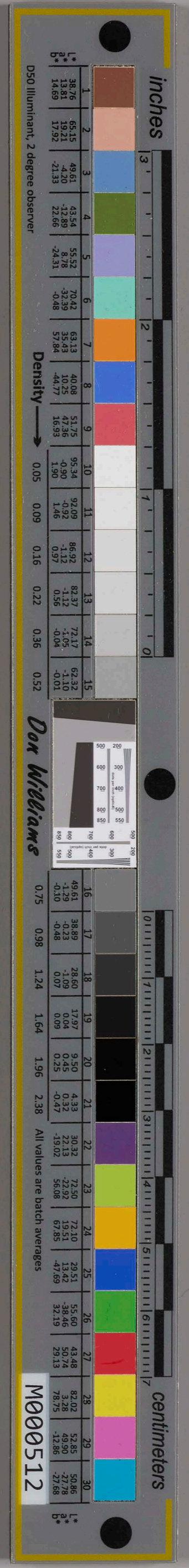
Wm & Mary by of Grace of God of 225
England & a King & Queen. &c.

To y^e Sheriff of Essex or Deputy Sheriff
or Constables of Salem

Wee comend you to warn & give notice
unto Joseph Flintee John Waters Sen^r
John Doolittle Corp. John Foster Capt Putnam &
his wife Rebecca his wife
that they & Every of them do appear

forthwith At y^e Court of Oyer & Terminer
holden at Salem shere to witte of truth
to y^e best of your knowledge on certain
Indictments Exhibited against George Judd
Sen^r herof Make Return. Just Hol.
dated in Salem Augth 4th 1692. 4th day
of fourth year of our Reign

Stephen Dowall Sec^y





inches 3 2 1 0

1	2	3	4	5	6	7	8	9	10	11	12	13	14	15
38.76	65.15	49.61	43.54	55.52	70.42	81.13	40.08	51.75	95.34	92.09	86.49	84.37	72.17	62.32
13.81	19.21	-1.20	-12.88	8.78	-23.39	15.23	10.25	47.38	-0.90	-0.82	1.12	1.12	-1.05	-1.10
14.69	17.32	-2.13	22.88	-24.31	-0.88	57.28	-4.77	10.93	1.90	1.06	0.97	0.92	-0.84	-0.81

Density → 0.05 0.09 0.16 0.22 0.36 0.52

centimeters

100 90 80 70 60 50 40 30 20 10 0

16 17 18 19 20 21 22 23 24 25 26 27 28 29 30

49.61	38.89	28.69	17.97	9.50	4.33	30.32	72.50	72.10	23.51	55.60	43.46	82.02	52.86	50.76
1.20	0.23	1.09	0.04	0.45	0.32	22.13	-27.02	19.51	13.42	-38.46	50.74	3.28	43.90	42.78
0.30	0.48	0.97	0.97	0.25	0.97	19.92	26.08	07.85	-4.69	32.19	29.13	-28.25	-42.88	-27.88

All values are batch averages

M00512