

Salem May the 20th 1692

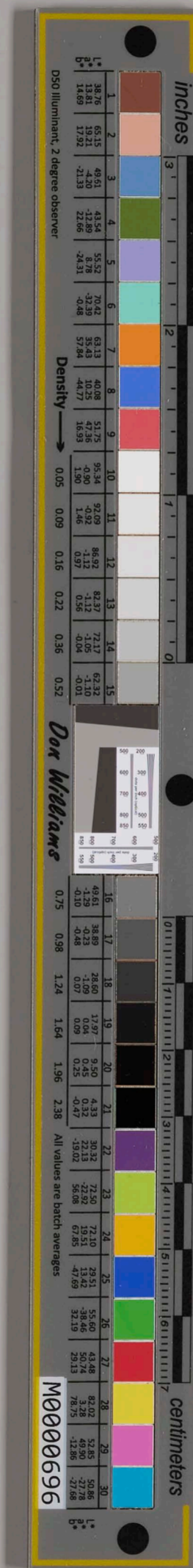
309

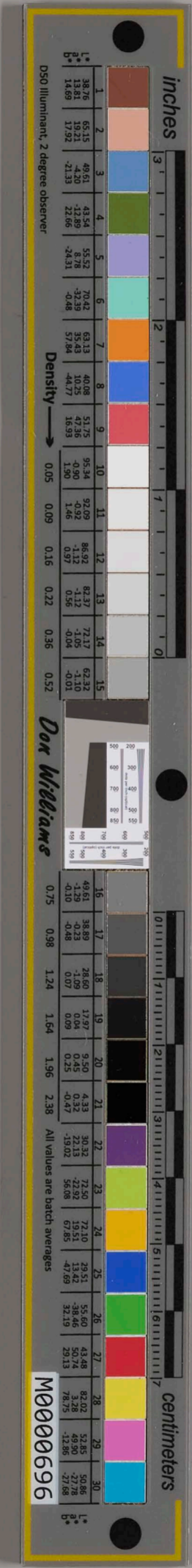
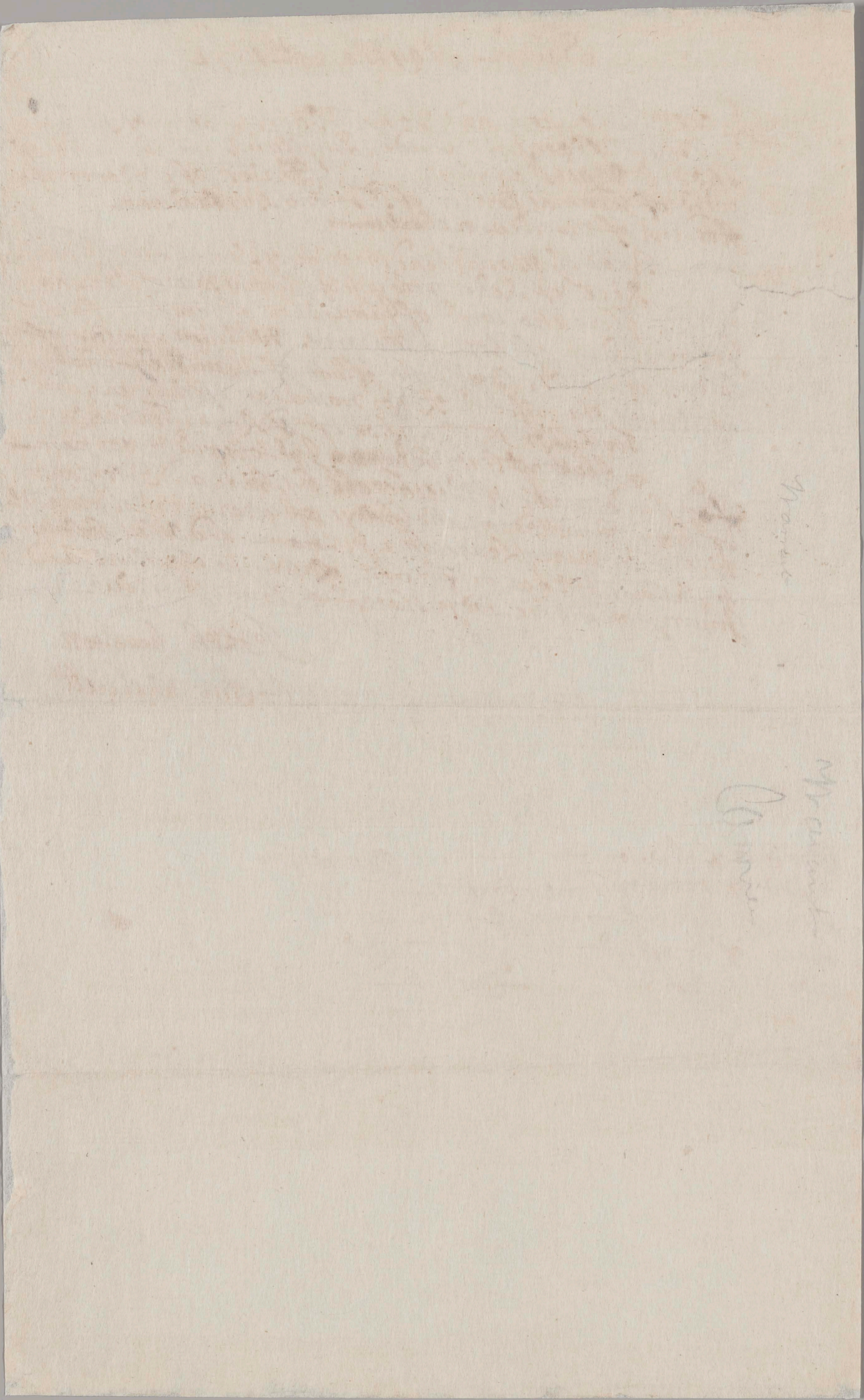
Joseph Houlton, and John Walcott both of Salem
Village Yeomen Trade Complaints in behalfe of
tho're Majors against Carrier of Andover the
wife of Thomas Carrier of S. Jovne his Landman
Hovick of Moulton a Chertown

Read of Marblehead the wife of Samuell Read of Ipswich
Rice of Reding the wife of Nicholas Rice of S. Jovne
Hlow the wife of James Hlow of Topsfield Capt
John Childer of S. Jovne Marmes. William Wrocker of
Salem Farmer, Capt John Flood of Ipswich
Toothaker the wife of Roger Toothaker of Andover,
Toothaker the daughter of Roger Toothaker
Abott of lines between Ipswich & Wontham
for Sundry acts of Witchcraft by them and Envy and
of them Committed on the Bodys of Mary Walcott, Abigail
Williams, Marcy Lewis, Ann pulham and others belonging
to Salem Village or Farmses lately, to the Hurt and
Injury of thoir Bodys therefore Causes Justice

Joseph Houlton
John Walcott

Carrier of Andover ———— Marshfield Essex
Read of Marblehead ———— Const
Rice of Reding ———— Const
Hlow of Topsfield ———— Const
Wm Procter ———— Const





inches

Patch #	1	2	3	4	5	6	7	8	9	10	11	12	13	14	15
L*	38.12	65.43	49.87	44.26	55.56	70.82	63.51	39.92	52.79	97.06	92.02	87.34	82.72	78.12	73.49
a*	13.24	18.11	-4.34	34.26	20.06	14.31	11.81	48.55	3.44	-0.42	-0.38	-0.33	-0.29	-0.25	-0.21
b*	15.07	18.51	24.49	20.44	23.80	16.19	11.51	14.07	11.81	1.06	0.20	0.16	0.12	0.08	0.04

Patch #	16	17	18	19	20	21	22	23	24	25	26	27	28	29	30	31	32	33	34	35
L*	39.12	38.62	38.12	37.62	37.12	36.62	36.12	35.62	35.12	34.62	34.12	33.62	33.12	32.62	32.12	31.62	31.12	30.62	30.12	29.62
a*	0.75	0.88	1.01	1.14	1.27	1.40	1.53	1.66	1.79	1.92	2.05	2.18	2.31	2.44	2.57	2.70	2.83	2.96	3.09	3.22
b*	0.75	0.88	1.01	1.14	1.27	1.40	1.53	1.66	1.79	1.92	2.05	2.18	2.31	2.44	2.57	2.70	2.83	2.96	3.09	3.22

Patch #	36	37	38	39	40	41	42	43	44	45	46	47	48	49	50	51	52	53	54	55
L*	39.12	38.62	38.12	37.62	37.12	36.62	36.12	35.62	35.12	34.62	34.12	33.62	33.12	32.62	32.12	31.62	31.12	30.62	30.12	29.62
a*	0.75	0.88	1.01	1.14	1.27	1.40	1.53	1.66	1.79	1.92	2.05	2.18	2.31	2.44	2.57	2.70	2.83	2.96	3.09	3.22
b*	0.75	0.88	1.01	1.14	1.27	1.40	1.53	1.66	1.79	1.92	2.05	2.18	2.31	2.44	2.57	2.70	2.83	2.96	3.09	3.22

Patch #	56	57	58	59	60	61	62	63	64	65	66	67	68	69	70	71	72	73	74	75
L*	39.12	38.62	38.12	37.62	37.12	36.62	36.12	35.62	35.12	34.62	34.12	33.62	33.12	32.62	32.12	31.62	31.12	30.62	30.12	29.62
a*	0.75	0.88	1.01	1.14	1.27	1.40	1.53	1.66	1.79	1.92	2.05	2.18	2.31	2.44	2.57	2.70	2.83	2.96	3.09	3.22
b*	0.75	0.88	1.01	1.14	1.27	1.40	1.53	1.66	1.79	1.92	2.05	2.18	2.31	2.44	2.57	2.70	2.83	2.96	3.09	3.22

Patch #	76	77	78	79	80	81	82	83	84	85	86	87	88	89	90	91	92	93	94	95
L*	39.12	38.62	38.12	37.62	37.12	36.62	36.12	35.62	35.12	34.62	34.12	33.62	33.12	32.62	32.12	31.62	31.12	30.62	30.12	29.62
a*	0.75	0.88	1.01	1.14	1.27	1.40	1.53	1.66	1.79	1.92	2.05	2.18	2.31	2.44	2.57	2.70	2.83	2.96	3.09	3.22
b*	0.75	0.88	1.01	1.14	1.27	1.40	1.53	1.66	1.79	1.92	2.05	2.18	2.31	2.44	2.57	2.70	2.83	2.96	3.09	3.22

centimeters

M000696