

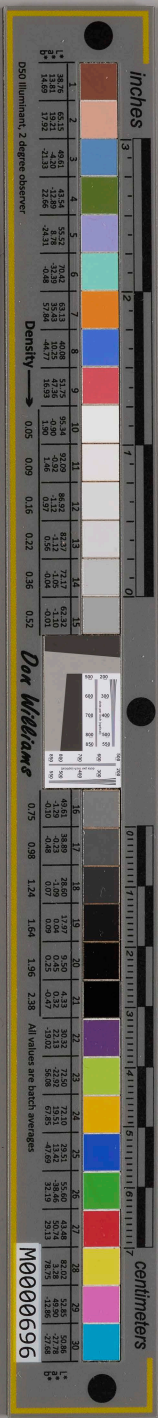
The destruction of Mary ssalcutt and Elizabeth
 Hutton. I that on the 29 of May 1692 we came
 to see James Holton how lay grievously tormented
 and we then saw John proctor and his wife
 his son boni proctor Sarah proctor and ~~other~~
~~many~~ all of them a pressing of the spirit of
 the third hand and his stomach and tormenting of
 him most grievously and then quickly after they
 told upon us and afflicted us most cruelly for
 a considerable time.

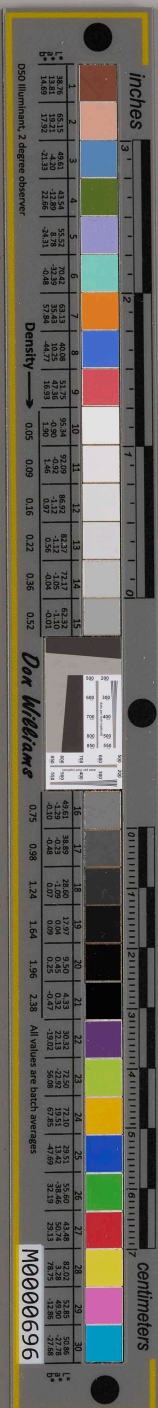
*Just in Curia of
 case*

James Holton. testimony and I that as-
 soon as Mary ssalcutt and Elizabeth Hutton
 was afflicted that at that same time I had
 days of my pains.

Just in Curia

Handwritten note in margin:
 I have been afflicted
 with the same spirit
 since the death of
 the first of the
 family.





Inches															Centimeters														
1 2 3 4 5 6 7 8 9 10 11 12 13 14 15 16 17 18 19 20 21 22 23 24 25 26 27 28 29 30																													
Density → 0.05 0.09 0.15 0.22 0.35 0.52																													
Dor Williams																													
0.75 0.98 1.24 1.64 1.96 2.38 All values are batch averages																													
M000696																													

Mary Walcott Olcott
and the Procter & Gamble Co.
of New York